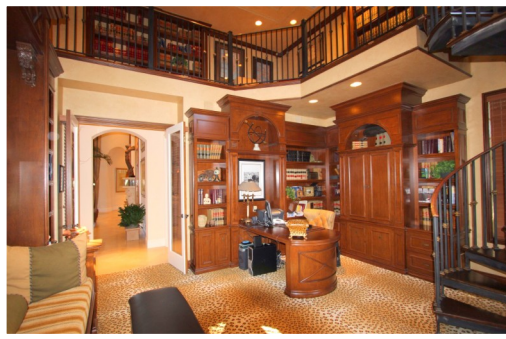




MIZNER COUNTRY CLUB

15972 D'ALENE DRIVE | DELRAY BEACH, FL

WWW.LUXURYRESORTPORTFOLIO.COM



LUXURY RESORT PORTFOLIO

*The Definitive Source For Luxury
Real Estate In South Florida*

LOCATION: Mizner Country Club, D'Alene Drive, Delray Beach, Florida 33446. Mizner Country Club real estate is situated in Suburban Delray Beach and conveniently to neighboring Boca Raton and the beautiful beaches along the Gold Coast of South Florida. Residents of Mizner Country Club enjoy a life of ease and relaxation in a lush setting evocative of Old World Florida.

COMMUNITY: Inspired by the architectural vision of historic Palm Beach architect Addison Mizner, Mizner Country Club is characterized by the elegance and rich detailing of the Mediterranean Revival style.

Extending over 384 lavishly landscaped acres, Mizner Country Club is gate-guarded and features 478 homes that lie on spacious manicured lots in ten subdivisions.

The community was developed by esteemed luxury homebuilder Toll Brothers Inc. and features two premier enclaves of custom estates from highly acclaimed builders National Custom Homes, Tuscan Harvey Estate Homes and Courchene Development Group. From the elegant Mediterranean inspired homes that make up Mizner Country Club, to its world-class amenities and verdant vistas, Mizner Country Club offers only the best to Members and their Guests.

In addition to the 18-hole Arnold Palmer, par 72 signature golf course, Mizner Country Club includes two award-winning Grande

Clubhouse's accompanied by full tennis and swimming facilities, a fitness center, an elegant grand ballroom, many dining options, two fully-stocked Pro Shops, private locker facilities, aerobics rooms, and much more. And, if you are planning a visit, you can stay right at the Club in one of the beautifully appointed guest suites, overlooking the magnificently landscaped Palazzo, 8th fairway and lakes.

PROPERTY: Situated within one of the most prestigious Mizner Country Club enclaves, this Tuscan inspired palazzo proves to be a cornucopia of sensory delights. The epitome of Delray Beach's Mizner Country Club living, this grand estate is infused with warm elegant European accents overlooking the lush 18-hole Arnold Palmer signature golf course.

A true Mediterranean Masterpiece, this impeccable custom built double golf fairway residence is being offered fully furnished and in its' designer decorated state.



\$ 2,325,000 US | Furnished

WWW.LUXURYRESORTPORTFOLIO.COM



RESIDENCE: Constructed by award-winning National Custom Homes in 2001, this five bedroom / seven bath Tuscan inspired masterpiece sprawls over more than 8,600 square feet, boasts stunning fairway views and is nothing short of magical.

Decorated by internationally acclaimed Marc Michaels Interior Design, Inc., the sophistication and comfort of the interior of this home holds the treasures that dreams are made of. Revel in the resort inspired outdoor surroundings and panoramic golf course landscapes of this estate which consists of covered loggias, a resort inspired pool / spa oasis and a well appointed al fresco summer kitchen.

A lush exotic tropical backdrop, custom paved circular motor court and a 3-automobile garage plus additional golf cart bay are added welcoming luxuries at this estate. Smart house technologies and conveniences include the Vantage whole house lighting system, Niles in-wall entertainment controls, hurricane impact windows and motorized electric shutters.

The main living areas include an awe inspiring raised marble floor double door entry arrival foyer fitted with inlaid marble mosaics and listellos.

This estate features a capacious luxuriant golf viewed formal living room complete with stone and marble fireplace, triple tiered rotunda tray ceiling fitted with decorative crown moldings and ambient lighting details. Your guests can enjoy an inviting full service pub-style entertaining bar adorned with hand crafted wood details and an elegant oversized yet intimate formal dining suite.

A handsome office mirrors the grandness of the stately formal living room with wood paneled walls and cabinetry that stretch upward towards this room's most theatrical detail... a second level library accessed from a dramatic spiraled staircase offering an intricate wood molded ceiling.

The expansive family room lends itself to both grand entertainment and casual family gatherings. The chef's kitchen is a gourmet delight and the perfect spot to create the perfect feast.

A true serene oasis with every sumptuous detail at your disposal, the decadent first floor grand master suite is designed with every imaginable amenity on hand and adorned with breathtaking unobstructed golf fairway views. Three additional generously sized guest en-suites and a Billiards Loft complete the second level.

SCAN. WATCH. LEARN



LUXURY RESORT PORTFOLIO

The Definitive Source For Luxury Real Estate In South Florida



LUXURY RESORT PORTFOLIO

The Definitive Source For Luxury Real Estate In South Florida

WWW.LUXURYRESORTPORTFOLIO.COM



Specializing in luxury real estate and fine properties of distinction on South Florida's Gold Coast, Luxury Resort Portfolio is *The Definitive Source For Luxury Real Estate In South Florida*. Exemplary of the exceptional Palm Beach County real estate their firm represents, Luxury Resort Portfolio provides the highest level of customized service, matched and exceeded only by the highest level of performance and is often referred to as the dynamic force in South Florida's high-end luxury real estate market.

The accomplished luxury real estate professionals of Luxury Resort Portfolio have the skills and advantages to facilitate transactions and bring about the results their clients expect. As South Florida luxury real estate experts as well as country club specialists, Luxury Resort Portfolio offers a combination of proficient and collaborative first-hand experience in both the luxury real estate market and the South Florida luxury lifestyle.

© 2010 Luxury Resort Portfolio, LLC. All Rights Reserved.

SCAN. WATCH. LEARN



THIS IS NOT TO BE CONSIDERED AS A SOLICITATION OF THE PROPERTY LISTED FOR SALE. INSPECTION BY APPOINTMENT ONLY.
THIS MATERIAL IS BASED UPON INFORMATION THAT WE CONSIDER RELIABLE. BECAUSE IT HAS BEEN SUPPLIED BY THIRD PARTIES WE CANNOT REPRESENT THAT IT IS ACCURATE OR COMPLETE.
IT SHOULD BE RELIED UPON AS SUCH. THIS OFFERING IS SUBJECT TO ERRORS, OMISSIONS, CHANGES INCLUDING PRICE OR WITHDRAWAL WITHOUT NOTICE



PHILIP LYLE SMITH
LUXURY ESTATE SPECIALIST | OWNER
Direct 561.445.2282
philip@luxuryresortportfolio.com

CARLA FERREIRA-SMITH
LUXURY ESTATE BROKER | OWNER
Direct 561.445.2299
carla@luxuryresortportfolio.com

Office 800.644.5616
Fax 800.644.0059

Design & Photography By
Carlyle Creative Group, LLC.
Main 561.927.7477